



Debby's Touch

by Debby Forshey-Choma

Starry, Starry Night



Debby Forshey-Choma

Published Artist

Royal Ambassador

DecoArt Artist

debby@debbystouch.com

www.DebbysTouch.com

Starry, Starry Night

by Debby Forshey-Choma

Royal Brushes available through www.RoyalBrush.com

#1360 – sm & med Debby Forshey's Texture brush
#1400 - 3/4 SG White Blending Mop
#3080 - 1 Oval Wash Combo
#4150 – 0, 2, 4, 6, 8, 12 Majestic shaders

#4160 – 5/8 Majestic angular
#4170 – 4 Majestic filbert
#4585 – 10/0, 5/0 Majestic liners
#4700 – ¾ Majestic glaze wash

DecoArt Americana Acrylics available through www.DecoArt.com

Admiral Blue 213 Indian Turquoise 087
Hauser Dark Green 133 Lavender 34
Hauser Light Green 131 Snow White 01

DecoArt Sealers/Finishes

DuraClear Matte Varnish DS60 Multi-Purpose Sealer DS17

Surface Source

Puffed Country Tin Star Ornament (5") #FT-2045 x2
Puffed Country Tin Star Ornament (6") #FT-2046
available through Della and Company, 5208 Lake Charles, Waco, TX 76710; 254.772.6927; dellaandcompany.com.

Misc Supplies

Spattering Tool C-Thru Graph ruler 3/16" white satin ribbon - 26"

Prep

1. Wash the tin with warm soapy water, rinse thoroughly.
Use a final rinse of white vinegar and water to make sure that any trace of oil is gone.
Allow to dry by placing in a 170° oven on a cookie sheet for three minutes; this will dry out the crevices.
It is best to allow air drying for 24 hours before beginning any further prep.

Apply one coat of Multi-Purpose Sealer with the glaze wash in a slip slap stroke to both sides of the ornament.
Basecoat both sides of each ornament with Admiral Blue + Multi-Purpose Sealer mixture 1:1.
Lightly sand with a small piece of brown bag. Wipe off with a lint-free cloth.
Re-basecoat with Admiral Blue; achieve an opaque coverage. Allow ample drying time between all coats.

Snow Hills

2. Transfer snow hill lines from the line drawings to the appropriate star.

Corner load the angle with Snow White, float a wide highlight and walk it out along the front side of each snow hill; mop to soften.
Re-float with Snow White along the top edge of each snow hill to brighten.

Transfer the remaining design lines to each appropriate star.
Use the graph ruler to aid in the transfer of any straight lines, by dragging the stylus along the ruler's edge.

Background Pines

3. With a pencil and graph ruler, transfer the center line for each pine. Work only on a couple of pines at a time.
Slightly pre-dampen the surface area with clean water. This will help the paint bleed; giving the boughs a softer effect.

Using the 4 filbert, load Snow White across the chisel edge, horizontally tap in the boughs.

To create a different species of pines, using the filbert - the boughs will droop more then when using the shader.

Starry, Starry Night

Up on the chisel edge, slightly pull the top of the pine. Tapping from left to right for the boughs, slowly and slightly widening as you work towards the base of the pine.
Allow a bit of the background to show through; so the pine doesn't look like a triangle.
Repeat the same steps with the remaining pines.

When dry, lightly pre-dampen each pine again, load the 4 filbert with Snow White, lightly tap here and there over the boughs to brighten.

Background Shrubs

4. With the med Texture brush and Snow White, lightly dance the shrubs behind buildings.
Then lightly re-dance with Snow White to brighten.

For the proper use of the Texture Brush, use the following method.

Dampen the bristles with water to start the separation of bristles. Tap bristles into the paint on your palette, hold it perpendicular to your palette, pounce it up and down to get some of the paint off – keeping the paint sparse on the brush. Note – this brush can be used on the whole foot or just the toe.

Tap lightly on the surface, dance with the brush up and down, rolling the brush in different directions in between your fingers when it is up in the air (like dancing the twist, light on your feet). Allow some drying time in between dances so the paint sets up and you don't end up with a gloppy or muddy look.

Basecoating Structures

5. Use the appropriate size shaders to basecoat.
Hauser Light Green – green walls
Lavender – purple walls
Indian Turquoise – aqua walls
Snow White – moon, roofs (only two coats; will be blotchy, giving shade areas)
- the two roofs that will have foreground pines pulled later; only one coat and only partially basecoated

Detailing Structures

6. With the 10/0 liner and thinned Snow White, pull the wall lines on each structure.

Shading Structures

7. Light source is from the left; shade will be on the right of each structure.
With the appropriate size shader, wash over the right walls for shade.

Hauser Light Green – shade with Hauser Dark Green

Lavender – shade with Admiral Blue

Indian Turquoise – shade with Admiral Blue

Now corner load the angle with the appropriate shade color, float shading under each roof.

Completing Details on Structures

8. With the 10/0 liner and Snow White, pull the side roof lines.

With the appropriate size shader and Snow White, pull the windows and doors.

Now pull the chimneys in the appropriate colors of structures' walls.

Paths

9. Corner load the angle with Admiral Blue, lightly float the right and left sides of each path.
The paths are soft and hazy.

Starry, Starry Night

Foreground Pines

10. Repeat steps for Background Pines.

Foreground Shrubs

11. Repeat steps for Background Shrubs; using the sm Texture brush.

Falling Snow

12. With the Spattering Tool and thinned Snow White, spatter the front and back of the star ornaments.

Finishing

13. To protect finished pieces, varnish with the DuraClear Matte Varnish.

Use the Oval Wash Combo to apply the varnish; this brush doesn't leave any visible brushstroke marks after the varnish has dried.

Finishing Touches

14. Cut the ribbon into 2-5" and 1-6" pieces, pull through the hole at the top of each star ornament; tie off.

For questions concerning this project, you can contact Debby at debby@debbystouch.com or visit her website at www.debbystouch.com or on facebook.

Copyright 2015, Debby Forshey-Choma. All rights reserved under Pan American and international copyright conventions. Photocopying or any type of mechanical electronic reproduction of any part of this pattern packet or the designs herein are prohibited, except purchaser may mechanically electronically enlarge or reduce patterns for their personal use. If this pattern packet is purchased as an e-Pattern or CD, you may not re-sell the pdf file, nor make copies of the pdf files for re-sale or to give away. The projects created from the patterns in this pattern packet may be personally painted by purchaser for fun or for sale (i.e., at local craft shows, on internet auctions such as eBay, and on their own websites or photo sites), although if shown on the internet I do ask that you please give me credit for the design in your description. The designs cannot be used to create web graphics. The product created from or any derivative product made from the designs in this pattern packet cannot be mass produced in any form without a licensing agreement from Debby Forshey-Choma.

Note to Teachers/Shop Owners... You may not teach this design or your adaptation of it unless a pattern is purchased for each student. I will be happy to sell patterns (print or digital) for each student at a wholesale discount so they can be included with the class supplies at a nominal cost.

Disclaimer: The information in this pattern packet is presented to you in good faith. Since the author/designer has no control over the physical conditions surrounding the application of information presented, I cannot guarantee results, nor will I be liable for any charges against the user for claims of copyright or patent infringement. Please note that with printing differences it is difficult to match the images in this pattern packet to the original pieces, although every effort has been made to do so. Therefore, your finished project may look a little different in color than the images in this pattern packet. The colors used in the project instructions are the ones used by me to paint the finished projects. Also with all E-Packets there is no way to guarantee the color, as all monitors and printers are different. For best results, use a high-grade paper or photo paper.

Starry, Starry Night

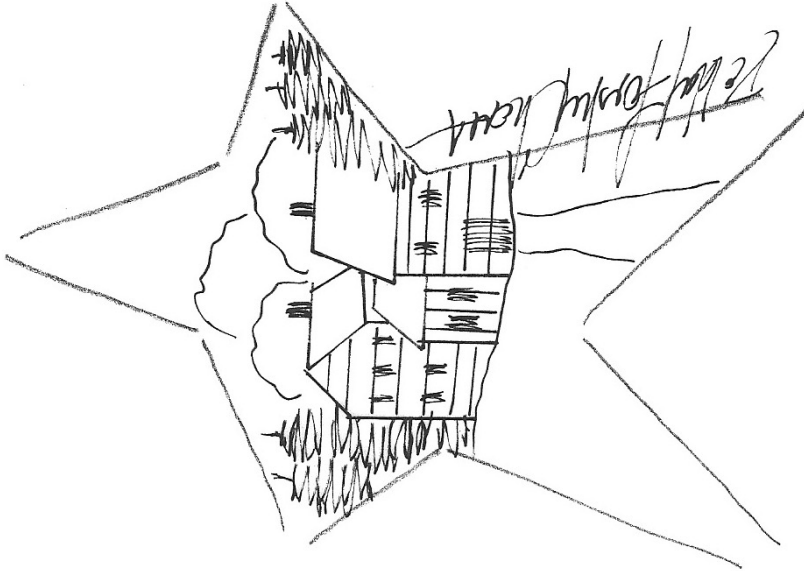


Starry, Starry Night



© Debby Forshey Choma

Choma



2001/10/10/10/20

na

